

# Centrifuge Tubes

## GENERAL PURPOSE

### 12 mL Flared-Top Urine Centrifuge Tubes

- Dimensions: 20 x 115mm
- Polystyrene (PS): 1500 RPM

Item #	Description	Unit
112017	12mL polystyrene (PS), graduated, Ames-Type	1500
112015	12mL polystyrene (PS), graduated, Kova-Type	2000
112030	1 2mL polystyrene (PS) with sediment bulb, graduated, Whale-Type	1500
113136	Snap cap (blue) for 12mL flared-top tubes	1500
113137	Snap cap (yellow) with sanitary grip for 1 2mL flared-top tubes	1500



From top to bottom: 112017, 112030, 112015

### 12 mL Centrifuge Tubes

- Graduated at 0.5, 1, 2.5, 5 and 10mL
- Dimensions: 16 x 100mm
- Polystyrene (PS): 1500 RPM • Polypropylene (PP): 3000 RPM

Item #	Description	Unit
112010	12mL (16 x1 00mm), conical bottom, graduated, polystyrene (PS)	2000
112010-500	12mL (16 x1 00mm), conical bottom, graduated, polystyrene (PS)	500
112040	12mL (16 x1 00mm), conical bottom, graduated, polypropylene (PP)	2000
112040-500	12mL (16 x1 00mm), conical bottom, graduated, polypropylene (PP)	500
112009	12mL (16 x1 00mm) tube, polystyrene (PS) with separate plug cap	1000
116142	16mm plug stopper, white	1000
116152	16mm flanged plug stopper, natural	1000



112010 & 112040

### 1 5mL Centrifuge Tubes

- Graduated from 0.5mL to 15mL in 0.5mL increments.
- Dimensions: 16.6 x 120mm
- Polystyrene (PS): 1500 RPM • Polypropylene (PP): 3000 RPM



Item #	Description	Unit
6260	1 5mL polystyrene (PS), 4 x 250/case	1000
6265	15mL polystyrene (PS), 100/dispenser box, 10 boxes/case	1000
6261	15mL polypropylene (PP), 4 x 250/case	1000
6266	15mL polypropylene (PP), 100/dispenser box, 10 boxes/case	1000
6262	15mL polystyrene (PS), with separate plug cap	1000
6263B	Plug cap for 15mL tubes	1000



6260/6265 Tube

# Centrifuge Tubes

## CLINICAL GRADE

Caesa-Lab's clinical centrifuge tubes are molded from polypropylene (PP) and feature flat-top, leak resistant blue caps. The tubes are printed with black graduation marks and have a large white writing area.

### 15 mL Polypropylene - Printed Graduations

- 15mL capacity
- Sterile tubes have attached blue screwcap
- Black printed graduations
- White printed writing space
- Spin rate: 8500 rpm
- Autoclavable (without cap)
- Temperature range: -40°C to +80°C
- Material:

Tube: Polypropylene (PP)  
Cap: High Density Polyethylene (HDPE)

Item #	Description	Unit
6285	15mL STERILE, 25/bag, 500/case	500
6286	15mL STERILE, 50/rack, 500/case	500
6284	15mL non-sterile, bulk, with separate blue screwcap	500



### 50 mL Polypropylene - Printed Graduations

- 50mL capacity
- Sterile tubes have attached blue screwcap
- Black printed graduations
- White printed writing space
- Spin rate: 8500 rpm
- Autoclavable (without cap)
- Temperature range: -40°C to +80°C
- Material:

Tube: Polypropylene (PP)  
Cap: High Density Polyethylene (HDPE)

Item #	Description	Unit
6288	50mL STERILE, 25/bag, 500/case	500
6289	50mL STERILE, 25/rack, 500/case	500
6287	50mL non-sterile, bulk, with separate blue screwcap	500



# Centrifuge Tubes

## RESEARCH GRADE

### 15 mL Acrylic - Printed Graduations

Acrylic is a stronger, scratch resistant material that offers equivalent chemical resistance to polystyrene, while providing exceptional clarity. Acrylic offers a greater spin rate which is 5,000 rpm (6,160 x g) compared to polystyrene, which has a limited spin rate of 2,500 rpm (3,000 x g)

- Cap is made from High Density Polyethylene (HDPE)
- Sterile tubes are Rnase/Dnase and Pyrogen free.
- White graduations and writing area.
- Spin Rate: 5,000 rpm (6,160 x g)

Item #	Description	Unit
6267	15mL acrylic (AC) centrifuge tube, non-sterile, with separate screwcap, bulk	500
6270	15mL acrylic (AC) centrifuge tube, STERILE, 25/bag, 500/case	500
6273	15mL acrylic (AC) centrifuge tube, STERILE, 50/rack, 500/case	500



### 15 mL Polypropylene - Printed Graduations

- Cap is made from High Density Polyethylene (HDPE)
- Sterile tubes are Rnase/Dnase and Pyrogen free.
- White graduations and writing area.
- Autoclavable (without screwcap)
- Spin Rate: 10,000 rpm (12,320 x g)

Item #	Description	Unit
6264	15mL polypropylene (PP) centrifuge tube, non-sterile, with separate screwcap,	500
6269	15mL polypropylene (PP) centrifuge tube, STERILE, 25/bag, 500/case	500
6271	15mL polypropylene (PP) centrifuge tube, STERILE, 50/rack, 500/case	500



### 50 mL Polypropylene - Printed Graduations

- Cap is made from High Density Polyethylene (HDPE)
- Sterile tubes are Rnase/Dnase and Pyrogen free
- White graduations and writing area
- Autoclavable (without screwcap)
- Spin Rate: 10,000 rpm (12,320 x g)

Item #	Description	Unit
6240	50mL polypropylene (PP) centrifuge tube, non-sterile, 25/bag, 500/case	500
6241	50mL polypropylene (PP) centrifuge tube, STERILE, 25/bag, 500/case	500
6242	50mL polypropylene (PP) centrifuge tube, non-sterile, 25/rack, 500/case	500
6243	50mL polypropylene (PP) centrifuge tube, STERILE, 25/rack, 500/case	500
6244	50mL polypropylene (PP) centrifuge tube, non-sterile, with separate screwcap,	500



# Centrifuge Tubes

## SELF-STANDING

### **30 mL Self-Standing**

- Cap is made from polypropylene (PP)
- Conical bottom with skirt
- Non-graduated • Non-sterile
- Spin Rate: Polystyrene: 4000 rpm • Polypropylene: 5000 rpm

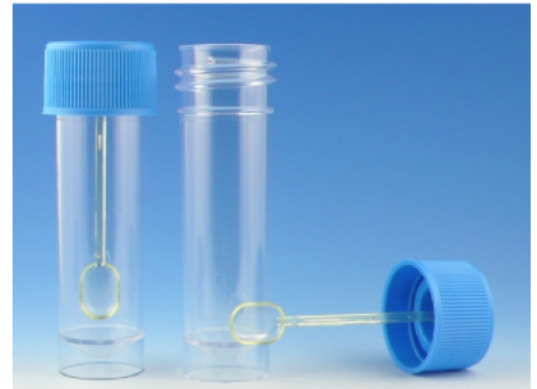


Item #	Description	Unit
109217	30mL, polystyrene (PS)	500
109220	30mL, polypropylene (PP)	500

### **30 mL Self-Standing with Spoon**

- Cap is made from polypropylene (PP)
- Spoon is made from polystyrene (PS)
- Conical bottom with skirt
- Non-graduated • Non-sterile
- REMOVE SPOON BEFORE PLACING IN CENTRIFUGE

Item #	Description	Unit
109117	30mL with spoon, polystyrene (PS)	500
109120	30mL with spoon, polypropylene (PP)	500



### **50 mL Self-Standing, Polypropylene - Printed Graduations**

- Cap is made from High Density Polyethylene (HDPE)
- Sterile tubes are Rnase/Dnase and Pyrogen free.
- White graduations and writing area.
- Autoclavable (without screwcap)
- Spin Rate: 5,000 rpm (6,160 x g)

Item #	Description	Unit
6255	50mL, non-sterile, bulk	500
6256	50mL, STERILE, bulk	500



# Centrifuge Tubes

## MICROCENTRIFUGE TUBES

Caesa's extensive line of disposable microcentrifuge tubes are available in either polypropylene or polyethylene. Sizes range from 0.25mL to 2mL. These tubes are offered with attached caps or without caps. Graduated tubes facilitate accurate sampling. The polypropylene tubes are resistant to most chemical reagents and can be autoclaved at 130°C. The polyethylene tubes are softer and can be easily cut to provide access to material at the bottom of each tube.

### Non-Graduated, Attached Cap

Item #	Description	Unit	Centrifuge Max. RPM
110520	250uL (0.25mL), polyethylene, non-autoclavable, 1000/bag	10,000	30,000
110540	400uL (0.4mL), Beckman Type, polyethylene, non-autoclavable	1000	12,000
110560	600uL (0.6mL), polypropylene, 1000/bag	10,000	30,000
111555	1.5mL, polypropylene, 500/bag	5000	26,000



### Graduated, Attached Cap

Item #	Description	Unit	Centrifuge Max. RPM
110550	500uL (0.5mL), Eppendorf Type, polypropylene	1000	18,000
111550	600uL (0.6mL), polypropylene	1000	30,000
111558	1.5mL, polypropylene	1000	26,000
111553A	1.5mL, polypropylene, AMBER	1000	18,000
111568	2mL, polypropylene, round bottom, 1000/pack	1000	18,000
111552	2mL, polypropylene, 500/pack	1000	18,000
111552A	2mL, polypropylene, AMBER, 500/pack, 10 packs/case	5000	18,000



### Graduated, Without Cap

Item #	Description	Unit	Centrifuge Max. RPM
111642	1.5mL, polypropylene	1000	26,000
111620	2.0mL, polypropylene, 1000/pack	10,000	25,000



## SCREW CAP MICROCENTRIFUGE TUBES

Caesa-Lab's line of disposable screwcap microcentrifuge tubes are available sterile or non-sterile. The sterile tubes include a cap with nitrile o-ring. The non-sterile tubes and caps are sold separately so that you have a choice of cap styles (with o-ring or without).

Tube = Polypropylene • Cap = Polypropylene • O-Ring = Nitrile  
Centrifuge Maximum RCF = 18,000 RCF

### Conical Bottom

Item #	Description	Unit
111690	0.5mL tube with o-ring cap, STERILE	500
111692	0.5mL tube only, non-sterile	100
111710	1.5mL tube with o-ring cap, STERILE	500
111712	1.5mL tube only, non-sterile	1000
111730	2.0mL tube with o-ring cap, STERILE	500
111732	2.0mL tube only, non-sterile	1000



### Screw Caps with O-Ring

Item #	Description	Unit
111671B	Blue	1000
111671C	Clear	1000
111671G	Green	1000
111671R	Red	1000
111671Y	Yellow	1000

### Self-Standing

Item #	Description	Unit
111700	0.5mL tube with o-ring cap, STERILE	500
111702	0.5mL tube only, non-sterile	1000
111720	1.5mL tube with o-ring cap, STERILE	500
111722	1.5mL tube only, non-sterile	1000
111740	2.0mL tube with o-ring cap, STERILE	500
111742	2.0mL tube only, non-sterile	1000

### Screw Caps

Item #	Description	Unit
111672B	Blue	1000
111672C	Clear	1000
111672G	Green	1000
111672R	Red	1000
111672Y	Yellow	1000