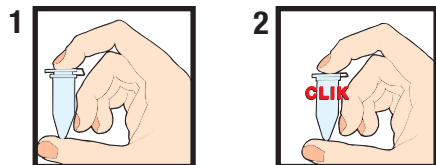


CLIKLOK™ FAMILY OF MICROCENTRIFUGE TUBES



1. If only spinning is to be done, a slight push of the cap over the tube is required.
2. For a complete seal, press further on snap cap until a **CLICK** is heard.

All Simport Microcentrifuge tubes offer a CLIKLOK™ seal especially designed to reduce popping where freezing, boiling, storing or shipping is required. This superior quality CLIKLOK™ system works in two stages:

T330

MICROCENTRIFUGE TUBES

Made of polypropylene

These 0.6 ml and 1.5 ml graduated rugged tubes are made of laboratory grade polypropylene suitable to withstand the stress of high speed centrifugation up to 20,000g. The one-piece construction incorporates a snug fitting and reliable attached cap even with prolonged boiling. For maximum sample recovery, the tube interior is highly polished. The bottom is reinforced for added protection against leakage. Maximum clarity for visual sample inspection. A frosted writing surface on closure and side of tube allows for easy and convenient sample identification. Highly polished interior ensures low liquid retention. Available in 4 colors.

Packaged in tamperproof resealable safety-lock bags.

Cat. #	Color	Volume	Qty/Pk	Qty/Cs
T330-6N	Natural	0.6 ml	500	5000
T330-6B	Blue	0.6 ml	500	5000
T330-6G	Green	0.6 ml	500	5000
T330-6Y	Yellow	0.6 ml	500	5000
Cat. #	Color	Volume	Qty/Pk	Qty/Cs
T330-7N	Natural	1.5 ml	500	5000
T330-7B	Blue	1.5 ml	500	5000
T330-7G	Green	1.5 ml	500	5000
T330-7Y	Yellow	1.5 ml	500	5000



T330-6



T330-7

T330-72, 72A

2ML MICROCENTRIFUGE TUBE

Made of polypropylene

These 2 ml microcentrifuge tubes offer a special locking clasp to produce a more secure closure. This will help to prevent tubes from opening during centrifugation, boiling, storing, freezing and shipping. They are graduated at 0.5, 1.0 and 1.5 ml. They are autoclavable to 121 °C. Pierceable lid. Etched surface on side of tube for sample identification.

Conical bottom 2 ml microcentrifuge tubes

Cat. #	Color	Qty/Pk	Qty/Cs
T330-72N	Natural	500	5000
T330-72B	Blue	500	5000
T330-72G	Green	500	5000
T330-72Y	Yellow	500	5000

Self-standing conical bottom 2 ml microcentrifuge tubes

Cat. #	Color	Qty/Pk	Qty/Cs
T330-72AN	Natural	500	5000
T330-72AB	Blue	500	5000
T330-72AG	Green	500	5000
T330-72AY	Yellow	500	5000



T330-72A

T330-72

MICROCENTRIFUGE TUBES



T330LST

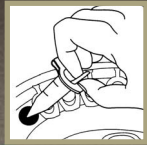
LOW SURFACE TENSION MICROCENTRIFUGE TUBES

Made of polypropylene

The special type of plastic used provides these tubes with a low adhesion surface and optimum sample yield. No lubricant (such as silicone) is necessary, thereby eliminating the danger of sample contamination.

It is also graduated and designed to withstand the stress of high speed centrifugation up to 20,000g. One-piece construction with snug fitting attached cap and reinforced tube bottom for added protection against leakage. Tubes are autoclavable to 121 °C. Packaged in tamperproof resealable safety-lock bags.

Cat. #	Color	Volume	Qty/Pk	Qty/Cs
T330-6LST	Natural	0.6 ml	500	5000
T330-7LST	Natural	1.5 ml	500	5000
T330-8LST	Natural	1.5 ml	500	5000
T330-72LST	Natural	2 ml	500	5000



Pick-up design for easier handling.

T330-8

MICROCENTRIFUGE TUBE WITH PICK-UP TAB

Made of polypropylene

This series of tubes has all the fine features of the T330-7 series, but the tube also incorporates a convenient pick-up tab for easier handling without actually touching the tube. Available in four different colors.

Cat. #	Color	Volume	Qty/Pk	Qty/Cs
T330-8N	Natural	1.5 ml	500	5000
T330-8B	Blue	1.5 ml	500	5000
T330-8G	Green	1.5 ml	500	5000
T330-8Y	Yellow	1.5 ml	500	5000

NEW



T330-15

MICROCENTRIFUGE TUBE WITH LOCKING CAP

Made of polypropylene

These Secure-Lock™ microcentrifuge tubes offer a special locking system which can be bent upward to lock on the cap, ensuring extra protection during critical steps such as boiling, freezing, centrifugation and shipping.

Tubes are graduated at 0.5, 1.0 and 1.5 mL. Lids can be pierced easily with a syringe needle. Etched surface on side of tube for sample identification. Can be used at extreme temperatures from -175 °C to +121 °C. Autoclavable. Maximum centrifugation RCF: 20,000g. Available in four different colors.

Packaged in tamperproof resealable safety-lock bags of 500 tubes.

Cat. #	Color	Qty/Pk	Qty/Cs
T330-15N	Natural	500	5000
T330-15B	Blue	500	5000
T330-15G	Green	500	5000
T330-15Y	Yellow	500	5000

T331-10

MICROCENTRIFUGE TUBE WITH SECURE-LOCK™

Made of polypropylene

These Secure-Lock™ microcentrifuge tubes offer a special locking clasp to produce a more secure closure. This will help to prevent tubes from opening during centrifugation, boiling, storing, freezing and shipping. They are graduated at 0.5, 1.0 and 1.5 ml. They are autoclavable to 121 °C. Pierceable lid. Etched surface on side of tube for sample identification.

Cat. #	Color	Qty/Pk	Qty/Cs
T331-10N	Natural	500	5000
T331-10B	Blue	500	5000
T331-10G	Green	500	5000
T331-10Y	Yellow	500	5000



T331-20

MICROCENTRIFUGE TUBE WITH PICK-UP TAB AND SECURE-LOCK™

Made of polypropylene

This tube is a combination of series T330-8 and T331-10 microcentrifuge tubes giving it the best of both: a pick-up tab for easier handling without actually touching the tube, and a Secure-Lock to help prevent tubes from opening during centrifugation, shipping, boiling or freezing. Graduated at 0.5, 1 and 1.5 ml. Autoclavable to 121 °C. Pierceable lid. Etched surface on side for sample identification.

Cat. #	Color	Qty/Pk	Qty/Cs
T331-20N	Natural	500	5000
T331-20B	Blue	500	5000
T331-20G	Green	500	5000
T331-20Y	Yellow	500	5000



T330-64

MICROCENTRIFUGE TUBE STORAGE BOX

Made of high impact polystyrene

This microcentrifuge tube storage box with a polyurethane foam insert is ideal for holding up to 64 tubes from 0.5 ml to 2 ml. It should be used within a temperature range of -90 °C to 80 °C.

A transparent cover allows you to see the contents of the box, and is keyed to the base in order to prevent misalignment. To improve your inventory control, you can write with a marker pen on the cover surface which is pre-printed with a series of squares (numbered from 1 to 64). You can also save space by stacking these boxes in freezers, refrigerators and on lab counters.

Cat. #	Qty/Pk	Qty/Cs
T330-64	4	24

